

# VIVID KOLLAGE

International Luxury Handmade Rugs Collection

[www.vividkollage.com](http://www.vividkollage.com)



# HOW TO CHOOSE **THE RIGHT RUG?**

Rugs and carpets are the ultimate decorative accessory; it gives warmth and personality to a space. But choosing the right rug can be a tricky business; the right one can finish a space to perfection, while the wrong one can make a room feel awkward or unfinished. But with so many styles, colors and materials to choose from, how do you know which one is right for you? It's actually easier than you think. Here are a few ground rules to help you find the right area rug for your space:

## **Right Styles**

Two of the biggest factors to consider when choosing a rug that you will love to live with are your lifestyle and your own personal style. Will you be placing your rug in a high-traffic area, such as a family room or hallway? Do you have young children or pets? If yes, you will want to choose a rug that's easy to clean and durable, like leather or wool. A patterned rug in darker shade will be able to hide dirt and stains in high-activity areas. If you want rug for a more decorative purpose, luxurious viscose, shaggy, cotton and leather rugs are available in rich designs and colors. Recycled fabric rugs can be opted by the more environmentally conscious users. Make sure any rug or carpet you are considering eventually complements your style.

## **Right Color**

If you have color and pattern going on in your space, you might want to stick with a single-color, either a neutral or a shade which complements your existing furnishings. If you want a patterned rug with many shades, add in furniture and accessories that coordinate afterwards. Dark, rich colors help define a more intimate space while lighter colors make a smaller space appear larger. Bright colors such as yellow, orange or red add warmth while cool colors like blue and green create calm.

## **Right Pattern**

Give yourself permission to go bold with patterns. Mixing patterns within the same color group will add depth to your décor. While selecting complementary colors to pair with your rug just make sure to select the nondominant color within the design. A brightly colored or boldly patterned rug can just be the right step if you want to lift up your space. Bold designs and large patterns in a small room can make it look larger.

## **Right Texture**

A room with a combination of different textures feels layered and rich, and an easy way to set this tone is by giving attention to the texture of your rug. Let your existing décor guide you, and aim for contrast.

## **Right Comfort**

If you prefer a softer feel, then natural fibers such as wool and cotton are for you. If you want a deep, lush, pile, you can get a similar feel from synthetic fibers. Natural fibers such as jute can be surprisingly soft underfoot, but it's not as warm as a woven rug.

## **Right Size**

An inaccurately sized rug can throw off the ambience of the entire room, even if the furniture is amazing. A rug should fit the size of your seating area and be as large as possible within it. The ideal situation is when all the legs of furniture are on the rug, but front-legs-only is a common practice.

## **Right Location And Purpose:**

It is critical to keep in mind the type of activity and traffic that will take place in the room. Durable rug is needed for high traffic areas, while soft rugs can be used in the low traffic rooms. Rugs made of wool are timeless and lasting. They can be designed intricately which makes them great for bedrooms and living rooms. Rugs made of synthetic fabrics are more affordable and easier to clean. Making them great for high traffic areas.

## **Right Cost**

Rugs are no longer considered a luxury which only a few enjoy. There are a wide variety of affordable options available in the market. Rugs which are made of Cotton, jute, hemp and chenille are affordable and durable. Synthetic fibers are designed to mimic the look and feel of wool and other expensive materials.



## KAZAN

Ivory/Charcoal  
Surface: Recycled Cotton  
120x180 cm  
160x230 cm  
190x290 cm  
5x8 ft  
8x10 ft

cotton 

hand woven 

recycled with love 



## ANDROS

Blue/Ivory  
Surface: Cotton, Printed  
120x180 cm  
160x230 cm  
190x290 cm  
5x8 ft  
8x10 ft

 cotton

 hand woven

 textured



 cotton

 hand woven

 textured

## KAMPEN

Multi  
Surface: Cotton, Printed  
120x180 cm  
160x230 cm  
190x290 cm  
5x8 ft  
8x10 ft

cotton 

hand woven 

recycled with love 







## ADONO

Multi

Surface: Cotton, Printed +  
Wool + Polyester

120x180 cm

160x230 cm

190x290 cm

5x8 ft

8x10 ft



cotton



wool



hand woven



intricate workmanship

## SELMER

Multi

Surface: Cotton, Printed +  
Wool + Polyester

120x180 cm

160x230 cm

190x290 cm

5x8 ft

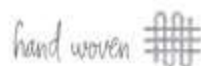
8x10 ft



cotton



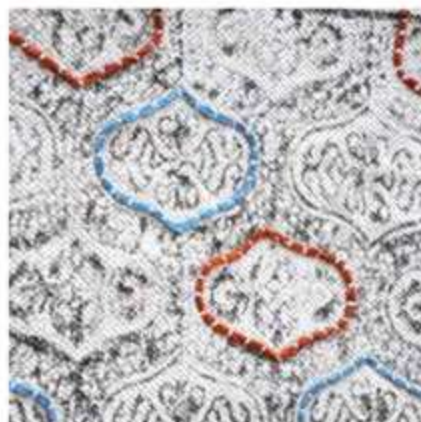
wool



hand woven



intricate workmanship



## WELSH

Grey/Blush

Surface: Cotton, Printed

120x180 cm

160x230 cm

190x290 cm

5x8 ft

8x10 ft



cotton



hand woven



intricate workmanship



## MEDIO

Ivory/Multi  
Surface: NZ Wool  
120x180 cm  
160x230 cm  
190x290 cm  
5x8 ft  
8x10 ft

wool 

table tufted 

plush pile 



## RIOM

Beige/Charcoal  
Surface: Leather  
120x180 cm  
160x230 cm  
190x290 cm  
5x8 ft  
8x10 ft

 recycled leather

 hand woven

## SARAH

Ivory  
Surface: Hemp + Wool  
120x180 cm  
160x230 cm  
190x290 cm  
5x8 ft  
8x10 ft

wool 

natural fiber 

hand woven 

best seller 







## SARAH

Ivory/Blue

Surface: Wool + Denim

120x180 cm

160x230 cm

190x290 cm

5x8 ft

8x10 ft



made from 100%  
recycled jeans

## TOMSA

Grey/Natural

Surface: Hemp + Cotton,

Printed

120x180 cm

160x230 cm



## BADEN

Charcoal/Ivory

Surface: Cotton, Printed

120x180 cm

160x230 cm

190x290 cm

5x8 ft

8x10 ft





## LEURA

Olive

Surface: Cotton, Printed

120x180 cm

160x230 cm

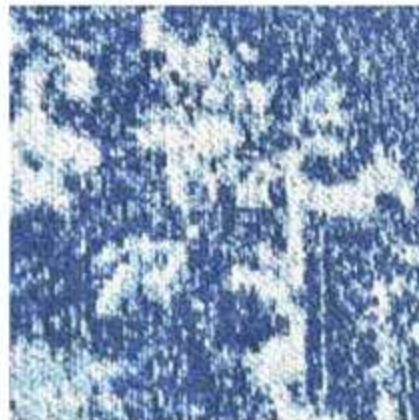
190x290 cm

5x8 ft

8x10 ft

cotton 

hand woven 



## MONAR

Blue

Surface: Cotton Chenille

120x180 cm

160x230 cm

190x290 cm

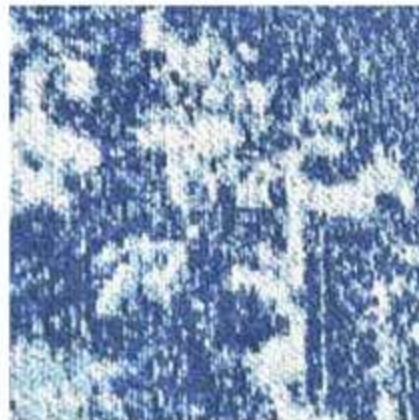
5x8 ft

8x10 ft

 cotton

 jacquard woven

 soft touch



## GORDON

Natural/Grey/Black

Surface: Wool + Cotton

120x180 cm

160x230 cm

190x290 cm

5x8 ft

8x10 ft

cotton 

wool 

hand woven 

undyed natural 







## SARAH

Multi

Surface: Recycled Silk + Hemp

120x180 cm

160x230 cm

190x290 cm

5x8 ft

8x10 ft

 natural fiber

 hand woven

 recycled with love

 best seller

## FEBA

Blue/Ivory

Surface: Wool

120x180 cm

160x230 cm

190x290 cm

5x8 ft

8x10 ft

 wool

 hand tufted



## ATTICA

Blue/Ivory

Surface: Wool

120x180 cm

160x230 cm

190x290 cm

5x8 ft

8x10 ft

 wool

 hand tufted



## TAVROS

Multi

Surface: Hemp

120x180 cm

160x230 cm

190x290 cm

5x8 ft

8x10 ft

natural fiber 

hand woven 



## MEDWIN

Grey

Surface: PP + Viscose

160x230 cm

 machine made in turkey

 lustre

 ultra modern

 extra resistant

## WEZEN

Taupe

Surface: Viscose

160x230 cm

190x290 cm

machine made in turkey 

lustre 

ultra modern 

extra resistant 







## ETTRICK

Charcoal/Ivory

Surface: Wool

120x180 cm

160x230 cm

190x290 cm

5x8 ft

8x10 ft



wool



hand knotted



textured



intricate workmanship

## ALTAIR

Ivory/Blue

Surface: Polypropylene

5x7 ft

6x9 ft

machine made



outdoor/indoor



## PEGASI

Ivory/Blue

Surface: Polypropylene

5x7 ft

6x9 ft



machine made



outdoor/indoor



# VIVID KOLLAGE

International Luxury Handmade Rugs Collection

[www.vividkollage.com](http://www.vividkollage.com)

Contact

Vivek Kaul  
✉ [vividkollage@gmail.com](mailto:vividkollage@gmail.com)

☎ +91-9811070864